



TOPICS

ISSUE 26

DATE 15 September 2017

Principal:	Mrs Annette Hollingsworth	AST:	Ms Corinne Leale	School Business Manager:	Mrs Lyn Steel
Assistant Principal:	Mrs Amanda Bird	AST:	Ms Renae Martin	School Psychologist:	Ms Amy Farrell
Assistant Principal:	Ms Jane Hudson	AST:	Ms Rhona Stevenson	Social Worker:	Ms Bethany McDougall
		AST:	Mrs Cate Walker	Speech Pathologist:	Mrs Robyn Williams

TERM DATES - 2017

Term 1	Wednesday 8 February - Thursday 13 April
Easter	Friday 14 April - Tuesday 18 April
Term 2	Monday 1 May - Friday 7 July
Term 3	Monday 24 July - Friday 29 September
Term 4	Monday 16 October - Thursday 21 December

Student Free Days

Tuesday 7 February Thursday 13 April
Monday 24 July Friday 3 November

SCHOOL TIMES

9.00 – 11.00am

Morning session

11.00 – 11.30am

RECESS

11.30 – 12.50pm

Mid-morning session

12.50 – 1.40pm

LUNCH (Students are supervised whilst eating their lunch from 12.50-1.00pm)

1.40 – 3.00pm

Afternoon session

NB: It would be appreciated if children do not arrive at school prior to 8.30am but we encourage children to be at school by 8.50am for the start of class

School Duty of Care is between 8.30am and 3.00pm

From The Principal

A warm welcome is extended to **Ethan Fraser and his family** as they begin their school journey at Trevallyn Primary School. It is wonderful to have them join us.

School Satisfaction Surveys

Mid-week we sent home School Satisfaction surveys for parents. We have this week and next for these to be completed. This year we are inviting all parents to contribute. These surveys contain questions on a range of matters about our school.

The survey provides an opportunity for students, parents and staff to provide important feedback. This is valued by our school as a means of identifying what we do well and opportunities for us to make improvements.

Staff and students from Grade 5 and above will also participate. This happens during school time.

Please be assured that your responses are secure and anonymous.

We encourage you to participate and complete the survey so that we have a clear direction when planning for future teaching and learning.

Please contact the office if you wish to use a school computer to complete the survey.

We are currently working on an upgrade of our school website and streamlining our method of communicating with parents. To this end we are investigating and planning with **Schoolzine**. You will be hearing more about this in the future. Stay tuned!

Kinder planning is progressing well due to the great support of our community with completion of enrolment forms. This has enabled us to plan for our **Pre-Kinder groups** that start in Term 4. A letter with times and dates for Pre-Kinder will be coming out this week.



A clash with Dance Fever and a Parent Information Session at RHS has occurred. We have been in touch with RHS and a solution is being sought. We will keep everyone informed of the resulting arrangement, as soon as possible.

Students have such creative, imaginative and beautiful artwork to share with you on **21 September** at our **Art Open Evening**. Please keep this date free.

Annette

Reminder

Please ensure that all parents/guardians visiting during the school day sign in at the Main Office. It is crucial that we know who is on site, at any point in time.

ECE Class Awards - 11 September

P-B (Butler)	Riley Medcraft	Jayde Genge
P-OW (Oliver/Walker)	Lily Murata	Jude Ponting
P-S (Stanton)	Millie Van Est	Jayda Wells
P-I-RB (Reid/Bender)	Any Matthews	Frank Prins
I-2-A (Andrew)	Lali Ndlovu	Maggie McLeod
I-H (Hepburn)	Evelyn Howe	Alexander Ransome
2-A (Alexander)	Fergus Broomhall	Alanna Walters
2-R (Rodrigues)	Ryan Campbell	Victoria Szramka

Congratulations to all the students above.

2017 Be Brave and Shave

The annual Trevallyn Primary School fundraiser for the Be Brave and Shave is fast approaching. This year we will be holding the event on Friday 27 October at 9.40am in the Max Fry Hall. If you are able to help out on the day by either cutting hair or shaving students, please contact Ms Jane Hudson via the school or email – jane.r.hudson@education.tas.gov.au

Parent Child Playgroup

Parent Child (0-4) runs Friday mornings
9:00 - 10:30am in the Kinder rooms.

Friday 22 September - Cat in the Hat

All welcome, come and join in!



5/6 Sport - Friday 22 September

Football	vs Punchbowl at Trevallyn with Ms Hudson
Soccer	vs Mowbray at Mowbray with Mr Johnson
Netball	vs Riverside at Trevallyn with Mrs Price
Hockey	vs East Launceston at St Leonards with Ms Stevenson
Kingball	bye with Mrs Petrohilos
Bootcamp	at Royal Park with Mrs Brown

Esk Band



Important News!

Change of Communication Application

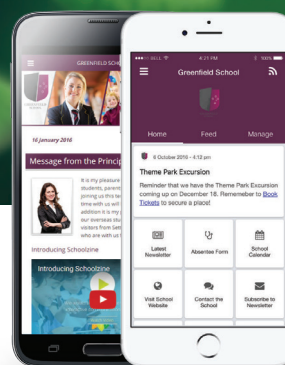
We are currently in the process of redeveloping our school webpage and are very excited about the features this will offer us and our ability to communicate with the school community.

This will mean that we will no longer be using Skoolbag as our notification app and moving to the Schoolzine App - SZapp.

Please note that Skoolbag will no longer be used by the school from the end of Term 3 and all notifications will be sent to parents via the Schoolzine App starting Term Four.

Please follow the instructions in this newsletter to install this application and remove your Skoolbag app as of Monday 16 October.

DOWNLOAD OUR SCHOOLZINE APP



SZapp gives you easy access to:

- Newsletters on the go • Latest News & Reminders
- Calendar • Forms and Documents
- Event Bookings • Absentee and Contact Forms

Simply go to your app store and search for **SZapp**.

If you need help, please contact the office.

For any further information see:
<http://www.schoolzineplus.com/app-faq>



Skip-A-Thon - 14 September

Congratulations to everyone who participated in the Skip-a-thon on Thursday.

Reminder - money and forms are due back at school by Friday 22 September.

We are architects and builders in Prep OW.

Working together with a partner, we had to design and then make a building using our magnetic blocks. We had to test the blocks to make sure our design could be achieved. What clever future thinkers and creators we have!

Tearsa- I liked talking with my partner.

Obie- I liked making the castle, it has red walls. We used blue for the floors.

Matilda- Our tower was really tall. It didn't fall down.



Science Expo

Last week we held a Science Expo to share the work our students have done in class. We played with slime, classified 'push and pull' objects, explored kinetic energy, watched technology demonstrations and tried many more engaging activities. Thanks to parents Matt Palmer, Ian and Kellie Sather and Al Hugo for your valuable involvement on the day! Congratulations to Grade 6 Price who won the NRM North quiz prize.



Art Celebration OPEN NIGHT

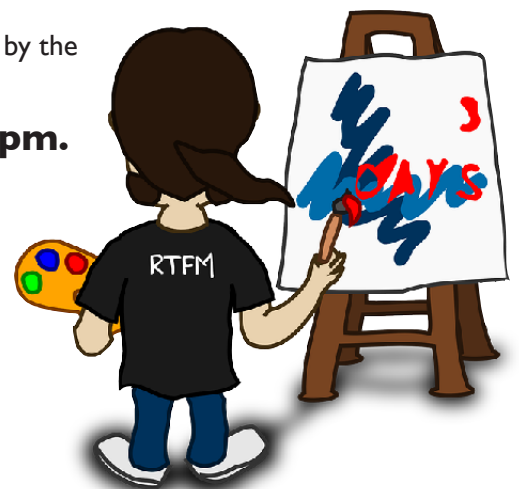
On Thursday 21 September we will be celebrating the artwork produced by the students.

The school will be OPEN from 5:00pm to 6:30pm.

Parents/friends/families are invited to come in and view their child's art work, in their classroom.

The children's daily drawing diaries, along with various types of artwork will be on display.

Please come and join us in celebrating the wonderful progress the children have made.



Class Placement and Classes 2018

Trevallyn Primary School is committed to meeting the educational needs of all students. A great deal of thought, planning and time goes into placing children into classes each year. Every effort is made to place each child in a learning environment that is happy, safe, productive and successful.

While in 2018 we will not be taking requests for students to be in particular classes or with specific students or teachers, we are happy to receive information above what the class teacher is currently aware of from parents/guardians relating to their child.

Parents/guardians wishing to forward information are asked to contact the following people by the end of Term 3 (September 29).

Please be mindful that Term 4 and end of year contact re class placement is outside the shared timeframe. These classes refer to 2018.

K-2 Renae Martin – renae.martin@education.tas.gov.au

(Amanda Bird on Leave at the end of the Term)

Grades 3-6 Jane Hudson – jane.r.hudson@education.tas.gov.au



Class Placement Policy

Trevallyn Primary School is committed to meeting the educational needs of all students. A great deal of thought, planning and time goes into placing children into classes each year. Every effort is made to place each child in a learning environment that is happy, safe, productive and successful.

Factors influencing class structures are:

- The projected number of students in each year level
- The number of teachers employed at the school and available facilities

Factors which are considered in the placement of students include:

- The educational needs of the students
- Work habits e.g. ability to work independently, within groups
- Behaviour
- Gender
- Social networks
- Students with High and Additional Needs – e.g. required learning adjustments, Teacher Assistant allocations, Individual Educational Plans (IEPs) & Individual Learning Plans (ILPs).

This policy supports the school to organise classes to cater for a range of academic abilities, opportunities for new social connections, work habits and to foster diversity.

Parents are invited, in a defined timeframe, to outline educational requests for class placements. Requests in relation to choice of teacher will not be considered as a placement factor.

What is the process for placing students into classes?

Based on the criteria listed above, teaching staff will meet early **Term 4** to establish class groupings for the following school year. Teachers of the current year level and school leaders meet with the other year level colleagues to create the class lists. (E.g. Year 2 teachers and school leaders decide Year 3 placements etc.)

Throughout the process, changes and adjustments are made. Each change triggers a chain reaction of other changes. It is acknowledged by all that friendships are important. However, to ensure balanced classes as outlined above, friendship groups are NOT the primary determining factor in class placement. Proposed class lists are submitted to the Leadership Team for final input and endorsement.

2018 enrolment – please keep us informed of any future enrolment information. If you will not be at Trevallyn next year or you know of any families moving in, please let us know. Our staffing is based on student numbers, so this information is crucial for our planning.

You will also see below a copy of our Class Placement Policy outlining the class placement process and the factors teachers take into consideration when organising classes to cater for a range of academic abilities, opportunities for new social connections, work habits and to foster diversity.

This policy has been endorsed by our School Association in 2017.

Singfest 2017 - 27 September

Our school choir will be busy this term as they prepare for Singfest 2017. Tickets for Singfest will be available from the Princess Theatre box office in Brisbane Street from Monday 7 August or by phone using credit card (with a small charge) on 6323 3666. There will be limited door sales on the night, cash only as there is no EFTPOS available. Tickets will be \$10 per person. Concession tickets will be available for children two and under who sit on a parent's lap, or a companion cardholder for anyone in a wheelchair.

The concert will start at 6:30pm and conclude at approximately 8:00pm.

This year we will be performing alongside Norwood Primary School. It will be a wonderful opportunity to meet and work with new people on Wednesday 27 September at the Albert Hall.



Woolworths Earn & Learn - Last Days

This year we will be participating in the Woolworths Earn & Learn program. Through this program we will be able to get new educational resources for our school/early learning centre – and all we need you to do is shop for your groceries at Woolworths.

Thank you to all the parents who have already dropped their stickers or completed sticker sheets into the office. If you have any stickers or incomplete sticker sheets at home, please return them to the office no later than Tuesday 19 September.

At the end of the promotion, we'll be able to get some great new equipment. The range is extensive and offers lots of items ideal for our students – including resources for Maths, English, Science and some fantastic fun supplies for Arts & Craft, Sport and for our library. If you'd like to know more visit woolworths.com.au/earnandlearn.



North v North West 5/6 Sport Representatives

By all accounts a great day was had by all. The Coach of the North football team, was particularly impressed as they hadn't beaten the strong North West team for many years.

Well done to all of those chosen to represent the North and well done to our Trevallyn Representatives.



INSTALLING SZapp



Apple devices:

1. On your device, open the App Store.
2. Search the App Store for SZapp.
3. Download and install SZapp.



Android devices:

1. On your device, open the Play Store.
2. Search the Play Store for SZapp.
3. Download and install SZapp.

← Australia regions
Queensland
South Australia
Western Australia
Northern Territory
Australian Capital Territory
Tasmania
Victoria
New South Wales

← Search Queensland

girs

Greenfield School

Greenfields Child Care Centre

1 2 3 4 5 6 7 8 9 0

q w e r t y u i o p

a s d f g h j k l

z x c v b n m

+ = @ ?

Done

← Greenfield School

SAVE

Greenfield School

Push Notifications

Default Subscription

Parents/Guardians

Sport

Students

P&F

Teacher/Staff Member

← Greenfield School

SAVE

Greenfield School

Enter Passcode

P&F requires you to enter a passcode.

Enter Passcode

Cancel Okay

FIND YOUR SCHOOL

Select your school's region.

Search for and select your school.

If you have installed more than one school, you can pick which school you would like to be your Default Subscription.

MANAGING NOTIFICATIONS

Choose which group/s you would like to receive notifications from. Groups with a padlock symbol next to them require a 4 digit passcode.

See your school for this passcode.

For any further information see:
<http://www.schoolzineplus.com/app-faq>



*** Community News ***

Don't forget to check the Community News on the Trevallyn Primary School website to find out what is happening in your local area.

Visit the website at: <https://trevallynprimary.education.tas.edu.au/Pages/Community-News.aspx>

Latest uploads include:

- PCYC Holiday Program
- Launceston Art Society

Lost Property



Lost property located at the office is overflowing. Please check if your child has lost any uniform and name all items of school clothing.

Kindergarten 2018

KINDERGARTEN

Do you live in the Trevallyn area and have a child turning 4 years old this year?

Do you have a friend who has a child who turns 4 years old this year, living in the Trevallyn area?

If you answered "Yes" to any of these questions, then they are old enough to start Kindergarten in 2018.

We are now taking enrolments for Kindergarten 2018, please see the administration staff in our school office.

Trevallyn Primary School Association

Chairperson: Chris Elliott Vice Chairperson: Deb Mitchell Treasurer: Angela Shipp

Correspondence Secretary: Joanne Beswick

Parent Representatives: Brian Wightman Nicole Willcox Phil Gregory Carolyn Saunders Gail Martin

Student Representatives: Ava Gleeson Olly Woodcock-Davis

School & Teacher Representatives: Annette Hollingsworth Jane Hudson Amanda Bird Naomi Brown

Dates For Your Diary

Monday 18 September	3-6 Assembly. Hosts 6 Price/6 Stevenson. Multipurpose Room. 1:40pm
Wednesday 20 September	5-PL, 5-JH and 5's from 5/6-B Excursion to Hollybank
Wednesday 20 September	2-A and 2-R Excursion to Cataract Gorge
Thursday 21 September	Art Open Evening. 5:00 - 6:30pm
Tuesday 26 September	Whole School Assembly. Max Fry Hall. 1:40pm
Wednesday 27 September	Singfest. Albert Hall. 6:30pm
Wednesday 27 September	School Association Meeting. Staff Room. 7:00pm
Friday 29 September	LSSSA State Athletics Carnival
Friday 29 September	Last Day of Term

Trevallyn Primary School
55 Gorge Road
Trevallyn Tas 7250
Phone: 6331 9657
Email: trevallyn.primary@education.tas.gov.au
Website: <https://education.tas.edu.au/trevallynprimary.gov.au>