

Trevallyn Primary School

UPCOMING EVENTS

Thursday 5 September

I-H and I-RG Excursion

Scholastic Book Club orders close

Wednesday 11 September

Prep - Grade 2 Assembly

Host - Grade 2

2:10pm - Multi Purpose Room

Thursday 12 September

North/North West Sports Exchange

Various Launceston venues

Friday 13 September

P-B and P-SC Excursion

Wednesday 18 September

SRC Athon Day (Further details to come)

Wednesday 25 September

End of Term Assembly

Host - Student Leaders

Celebration of Achievement Theme

Multi Purpose Room

1:40pm Grade 3 - 6

2:15pm Prep - Grade 2

Singfest - Albert Hall

TERM DATES 2019

Term 3

Tuesday 23 July - Friday 27 September

Term 4

Monday 14 October - Thursday 19 December

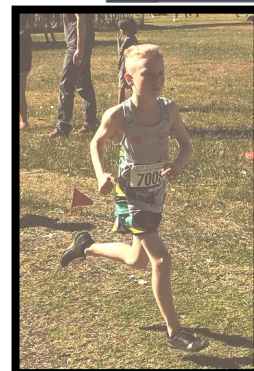
2019 Student free days

(Professional Learning Days)

Friday 1 November

FROM THE PRINCIPAL

Lachlan Preece has this week returned from the **Australian Cross Country Championships** in Wollongong as part of the Tasmanian team. He competed in two events, the individual 2KM for 10 year old boys and came 25th, ran a personal best and was the third Tasmanian home. In the team relay he also ran a personal best. Congratulations to Lachlan and his family on this high order achievement and impressive representation of your school and your state.



It is the time of the year when parents, staff and senior students conduct **school satisfaction surveys** containing questions on a range of matters about our school.

These are important as they provide an opportunity for important feedback to be given. We value this feedback as a means of identifying what the school does well and opportunities for the school to make improvements.

Students from Grade 5 and 6, parents/careers and staff will be invited to participate. Students will undertake the survey during school time. We have until 13 September for completion.

You will have received a letter last week explaining how to participate in the parent survey. Your responses will be anonymous and secure. We encourage you to participate and complete the survey so that TPS has informed direction when planning for the future.

Please contact the office if you wish to use a school computer to complete the survey.

Our Grade 3-6 students are involved in the **Growing Up Program** learning this week and we are all very proud of our students' learning and attitude. Our facilitator, Mrs McKean has reported nothing but positives of all class sessions.

This week we have **farewelled Mrs de Boer as she begins Maternity Leave**. All the very best to Claire and her family on the most anticipated arrival of their baby.

Please see page 4 for class placement and class information for 2020.

I hope the fathers in our community were able to enjoy our breakfast this morning and that Sunday is a happy and enjoyable day for you all.



FROM THE PRINCIPAL CONTINUED

Please see below review of school intake areas and second consultation information.

Annette



REVIEW OF SCHOOL INTAKE AREAS - SECOND CONSULTATION ROUND

The Department is seeking your views as part of its ongoing review of school intake areas for Tasmanian government primary and combined (district) schools, applicable from 2021. This is the second stage of community consultation we will be holding prior to the maps being published.

Please note:

- Parents will still be able to apply to their school of choice, if capacity allows.
- The review will not change the way schools enrol students who live outside their intake area.
- The review will not affect students who are already enrolled in a school before 2021.
- If a child has a sibling already attending a school outside their intake area, then the child can enrol at the same school as their sibling.

We have developed a set of Proposed Intake Area Maps, based on feedback received on suggested intake area maps during the first consultation round. We invite the Tasmanian community to provide feedback on the new Proposed Maps by **Friday, 27 September 2019**.

The *Education Act 2016* requires DoE to review intake areas at least once every five years. This requirement ensures that intake areas are regularly reviewed and remain current as communities and demographics change.

How to view Proposed Intake Area Maps

The Proposed Intake Area Maps are available to view via the:

- [intake area PDF maps](#) for each school showing the Proposed Intake Area
- [LIST Map Web App](#) (mobile device friendly) which provides an address search feature and access to a detailed, interactive map with layers to show the round 1 map and Proposed Intake Area. (Please note that at times of high demand functionality may be affected.)

How to provide feedback

We welcome your input as part of the review to inform any further necessary adjustments to the Proposed Intake Area Maps. All feedback will be considered by the Department.

Public feedback about the intake areas may be provided by completing the short [survey](#) by **Friday, 27 September 2019**. Alternatively, feedback can be provided by:

- email to areas@education.tas.gov.au, or
- mailed to Intake Area Review, GPO Box 169 Hobart TAS 7001.

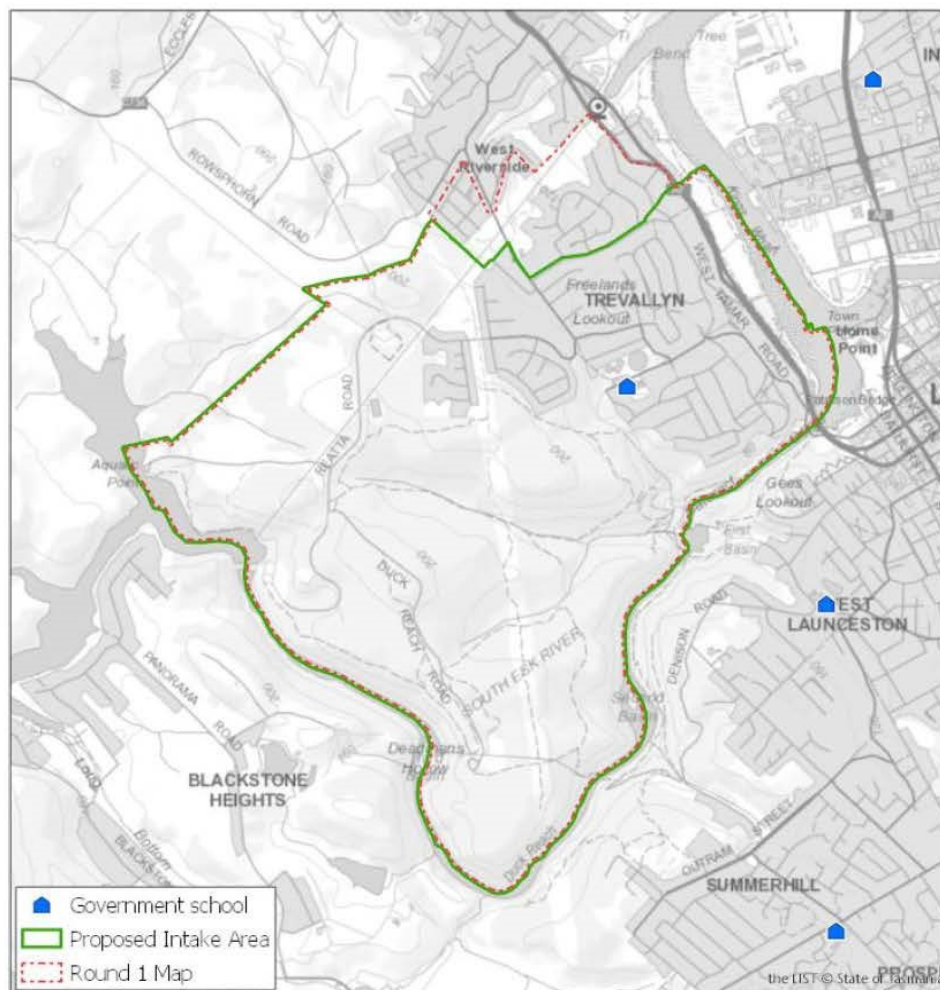
If you require online access or access to a computer, please visit a [Libraries Tasmania location](#) for free online access. For Department of Education enquiries or assistance, please contact the Service Centre at ServiceCentre@education.tas.gov.au or phone 1800 816 057.

Feedback will not be made public, in order to allow feedback about specific student and family circumstances, and to protect those involved from being publicly identified.

Intake Area Review – Round 2 Consultation

Trevallyn Primary School Proposed Intake Area

The Proposed Intake Area is shown below. To search for an address or see a more detailed map, please access our [online app](#).



To find out more about Intake Areas, please visit our [website](#) or to provide feedback please complete our short [survey](#).

GRADE 3 - 6 PRIMARY CLASS AWARDS - WEDNESDAY 28 AUGUST

3-dW Oliver H, Seb B and Charlie M

3-R Luke D, Stella M and Jakobie F

4-R Jack B, Tyler B and Elise T

4-T Alanna W and William W

4-5-P Lauren M, Sebastian M, Ethan B and Joshua W

5-B Isaac D, Lochie P, Daisy B and Ava H

5-HF Matilda B, Mia S, Hallie W and Ida W

6-PF Chase K, Maiya R, Briely M and Lewis B

6-SV Sungchae P and Amaya W

Congratulations to all these students.

ASSEMBLY ROSTER 2019

Assembly day, time and location – Wednesdays, starting time – 2:10pm – Multipurpose Room

Term Three Value - Growth		
Sector	Class	Date
P-2	Grade Two	11 September
Whole School	Student Leaders hosting – Celebration of Achievement Theme	25 September
Term Four Value - Courage		
Sector	Class	Date
3-6	Grade 4/5P, 5HF & 5B	23 October
P-2	1 Reid/Goss & 1 Hepburn	6 November
3-6	4 Radosavljevic & 4 Trotman	20 November
K-2	K-2 End of Year Celebration Assembly	4 December
Whole School	Student Leaders hosting – Christmas Theme	18 December

CLASS PLACEMENT AND CLASSES 2020

We are not far off beginning the task of organising classes for 2020.

Your child's current teacher is in the best position to formulate classes for next year. Grade teams, school leaders and the previous year teacher are also consulted in our class placement process. Our teachers take on board a number of considerations when placing students. Our goal is to create the most equitable classes possible, taking into account gender, learning ability, social connection, work habits, behaviour etc. Whilst parents have one child to consider (in a given class), we have approximately 500 children to consider next year, and so decisions need to be suitable for the majority. We have dedicated, hardworking teachers who are collectively responsible for all our children. No matter what grade or class – each child in this school will be taught by quality teachers in a school culture of high expectations. We will not be taking requests for students to be in particular classes or with specific students or teachers.

Teachers use a variety of methods to group children in order to maximise learning and the focus is always on the individual and personalising student learning. At Trevallyn we have been thoughtful about developing opportunities for students to interact and learn from one another – both within their own class and in conjunction with another or across grades. These observations inform us about the conditions that best suit a particular student to learn, which styles they have, who they are friends with; who they learn best with. We consider all these factors when placing children in classes for the following year.

Please understand, teachers will make the best decision for all children in the school – including what we believe is in the educational and social/emotional well-being of the children. We are **unable** to accommodate personal requests because accommodating everyone's personal wishes will not support what is best for **all** children. If there is any information that you think is above what the class teacher is currently aware of or we need to take into account before we start creating classes, can you please email before the end of this term (27 September):

K-2 Renae Martin – renae.martin@education.tas.gov.au or

Anna Goss – anna.goss@education.tas.gov.au

Grades 3-6 Annette Hollingsworth – annette.hollingsworth@education.tas.gov.au

Please be mindful that Term 4 and end of year contact about class placement is outside the shared timeframe.

You will also see on the next page a copy of our Class Placement Policy which has been endorsed by our School Association.

CLASS PLACEMENT POLICY

Trevallyn Primary School is committed to meeting the educational needs of all students. A great deal of thought, planning and time goes into placing children into classes each year. Every effort is made to place each child in a learning environment that is happy, safe, productive and successful.



Factors influencing class structures are:

- The projected number of students in each year level
- The number of teachers employed at the school and available facilities

Factors which are considered in the placement of students include:

- The educational needs of the students
- Work habits e.g. ability to work independently, within groups
- Behaviour
- Gender
- Social networks
- Students with Disabilities – e.g. required learning adjustments, Teacher Assistant allocations, Learning Plans (LP's).

This policy supports the school to organise classes to cater for a range of academic abilities, opportunities for new social connections, work habits and to foster diversity.

Parents are invited, in a defined timeframe, to outline educational requests for class placements. Requests in relation to choice of teacher will not be considered as a placement factor.

What is the process for placing students into classes?

Based on the criteria listed above, teaching staff will meet early **Term 4** to establish class groupings for the following school year. Teachers of the current year level and school leaders meet with the other year level colleagues to create the class lists. (E.g. Year 2 teachers and school leaders decide Year 3 placements)

Throughout the process, changes and adjustments are made. Each change triggers a chain reaction of other changes. It is acknowledged by all that friendships are important. However, to ensure balanced classes as outlined above, friendship groups are NOT the primary determining factor in class placement. Proposed class lists are submitted to the Leadership Team for final input and endorsement.

LITTLE ATHLETICS

On Tuesday 27 August we had some volunteers from Launceston Little Athletics visit and run some activities with some grade 1/2 students. Students had a great time competing in the shuttle relay, long jump, discus, shotput and hurdles! If you are interested in having a go at Little Athletics, please see them on Facebook or call Andrew on 0417 165 219.





Here is how some of our students enjoyed Science Week



**Grade 4
Trotman
enjoying
Mission Space
and the
Dinosaur
Evolution
exhibits**



The Grade Six favourite event was the Crazy Scientist show.



SCHOOL ASSOCIATION SUPPORT OF MAX FRY HALL COMMITTEE

The School Association Committee has resolved support the Max Fry Hall Committee in their Tasmanian Community Fund application to re-roof the hall.

Should the grant process be successful, the School Association will donate \$1000 towards the project.

If you wish to discuss this matter further, please don't hesitate to contact me at brianwightman3@gmail.com or 0429 073 773.

Brian Wightman - School Association Committee Chair

EARLY YEARS OF SCHOOL - MATHEMATICS

The Operations

Only after children have learnt to count and they have become fluent counters and understand the written form of numbers, can they begin to learn about the operations – learning to add, subtract, multiply, divide and so on.

Teaching children to add

Teaching children sums involves some very abstract thinking, therefore in the early years of schooling we teach children to add using materials so they have something concrete to use. Manipulating and seeing numbers represented is vital to building understanding. Two amounts can be represented – such as 4 teddies and 3 teddies and the children will be asked how many altogether.



Initially students might count all the teddies (one, two, three, four, five, six, seven – seven – there are seven teddies) but later we will move the children towards using more efficient strategies. Initially, they need to become accustomed to the idea that adding means joining the amounts together.

Activities to do with your child

- ♦ Play games with dominoes that require children to add both sides of the domino together
- ♦ Use counters, beads, pebbles, blocks etc. to practice adding (How many altogether?) with two groups of single digit numbers that initially add up to 10 or less.
- ♦ Look for natural opportunities to add items: “Look, there are 3 pieces of carrot on your plate and 5 on Dad’s plate, how many are there altogether? What if I count Dad’s first?”

SCHOOL BANKING VOLUNTEERS REQUIRED

Calling for volunteers – we need your help!

Our students really enjoy participating in the Commonwealth Bank School Banking program and to keep this program running we need your help.

The program requires a volunteer School Banking Co-ordinator to facilitate the banking and distribution of School Banking rewards. This only takes a small amount of your time, a few hours on **Tuesdays** (fortnightly at the moment) and the Commonwealth Bank will provide support in how to run the program. Your help with the program will greatly benefit students as they develop vital saving skills and also help our school with fundraising.

If you are interested in volunteering for this great program, please leave your name and contact details at the school office.

SINGFEST - 25 SEPTEMBER

The poster is for a 'Singfest' event celebrating ten years (2009-2019) at Albert Hall, Launceston. It features a large, stylized 'Singfest' title in white on a black background with gold confetti. Below the title, it lists the date and time: 25 SEPTEMBER, 6:30 p.m. and 26 SEPTEMBER, 6:30 p.m. A list of participating schools is provided, including Evandale Primary School, East Launceston Primary School, Exeter Primary School, The Launceston Preparatory School, Riverside Primary School, Mowbray Heights Primary School, Scotch Oakburn Junior School, Norwood Primary School, Scottsdale Primary School, Punchbowl Primary School, St Thomas More's Catholic School, St Finn Barr's Catholic School, Summerdale Primary School, St Anthony's Catholic School, Youngtown Primary School, and Trevallyn Primary School. The poster also includes logos for the event and the PRINCESS THEATRE BOX OFFICE.

FATHER'S DAY BREAKFAST



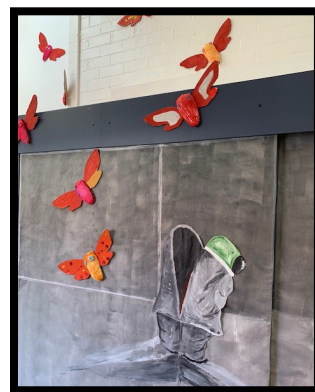
FATHER'S DAY BREAKFAST



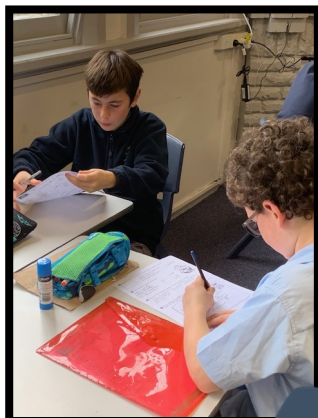
Grade 5 Bransden



Book Week



Sharni Layton Netball Visit

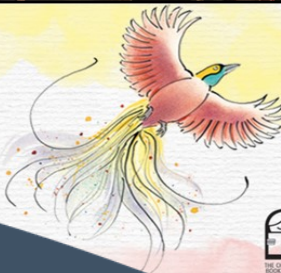


BOOK WEEK PARADE



Reading is my
SECRET POWER

CBCA Book Week
17-23 August 2019
#CBCA2019



The Children's Book Council of Australia

BOOK WEEK PARADE



Launching Into Learning

Great Clothing Swap!!

Friday September 20



This is a wonderful opportunity for you to bring in something(s) that no longer fits your child and swap it over for something that will fit!

TREVALLYN 5/6 SPORT - 6 SEPTEMBER AND 13 SEPTEMBER

Sport	Versus - 6 Sept	Venue - 6 Sept	Versus - 13 Sept	Venue - 13 Sept
Hockey	West Launceston	St Leonards Hockey Centre	Summerdale	Windsor Park
Netball	West Launceston	West Launceston	Riverside	Riverside
Netball Developers	East Tamar	East Tamar	Riverside	Trevallyn
Football Developers	Ravenswood	Ravenswood	Glen Dhu	Trevallyn
Soccer 1	Mowbray	Trevallyn	Glen Dhu	Glen Dhu
Soccer 2	West Launceston	Trevallyn	East Launceston	Trevallyn

Cancellation of 5/6 Sport will be notified via Skoolzine

LAUNCHING INTO LEARNING

KINDERGARTEN 2020



Launching into Learning

9am - 10:30 am

Kindergarten Classroom

Birth - 4 years

Friday September 6

Kinder Gym - Multipurpose Room



Friday September 13 - Cats!



Come and join in the fun!!!

Do you live in the Trevallyn area and have a child turning 4 years old this year?

We are now taking enrolments for Kindergarten 2020. Please see the school office for more information.

Welcome to Kindergarten

COMMUNITY NEWS

- Artwing - October School Holidays Arts Program
Phone 0407 940 684 or
email: artwing2019@gmail.com.au for more information



Trevallyn Primary School

CANTEEN OPENING HOURS

Wednesday, Thursday and Friday

UNIFORM SHOP OPENING HOURS

Monday afternoons 2:30pm – 3:15pm and
Tuesday mornings 8:30am – 9:15am

CONTACT DETAILS

55 Gorge Road
Trevallyn Tas 7250
Phone 03 6331 9657
Email trevallyn.primary@education.tas.gov.au
Web <https://trevallynprimary.education.tas.edu.au/>